



# NEWSLETTER

Hi everyone and welcome to the August 2011 newsletter.

We've had the AGM last month and congratulations to all those who were re-elected, elected or volunteered.

Thanks to Joe Hardman VP for the following information, and I write verbatim:

The last comp on 22<sup>nd</sup>, 23<sup>rd</sup>, 24<sup>th</sup> was a snapper competition. The snapper competition was cancelled, and it replaced with an estuary competition. For full report see the Captain's section next page.

The presentation night is on the 27<sup>th</sup> at Horton Park Golf Club, \$20 for members, \$30 for non members and you are requested to pay by the August 11<sup>th</sup> meeting or at Fishing World before the due date (thanks again to Barb and Wayne for doing that). The presentation night starts at 6.30pm. For more info see the Present's report.

Members fees are due now (\$70 for a single, \$100 for a family). Please pay at the next meeting on next Thursday, August 11<sup>th</sup> (held at the Coast Guard 7pm).

The next competition, a bream competition, is scheduled for the 12<sup>th</sup>, 13<sup>th</sup> and 14<sup>th</sup> of August. Weigh-in is at Fisherman's Road at 1pm on Sunday 14<sup>th</sup>.

The August members' meeting is this Thursday (the 11<sup>th</sup>) while the September members' meeting is on the 8<sup>th</sup> at the Coast Guard starting at 7pm.



Jo Hardman at "pensioner's corner"

On September 9<sup>th</sup>, 10<sup>th</sup> and 11<sup>th</sup> there is an open competition for locations south of Point Cartwright and the weigh-in will be behind the Coast Guard on Sunday 11<sup>th</sup> at 3.30pm (BBQ at 4pm).

The John Pope memorial golf day is on the 25<sup>th</sup> September at Glenview golf club on the Irwin Way with a 7.30 am start. It will be \$20 for players and \$5 for non players which will be for the cost of lunch. Pay on the day but put your name down before so we can book the number of tee off times and plan the catering.



## Around the Traps

The garage sale for Ray Gibbing's fishing collection was very successful and some of the residue will be available at the Sept meeting. Cheers Ross R.

Thanks to all those who organized the sale and bought items - proceeds will go to assist Ray's family.

### President's Pep

We will organising our Calendar of Events at this meeting so that everybody can have an input in what events are held this year, so please have a think of what competitions and away trips that you want for the year. Our Presentation Dinner is almost upon us again, and we need the numbers of those coming for catering purposes. The cost is \$20 per member and \$30 for non members, the rest is subsidised by the club. It is being held at the Horton Park Golf Club with drinks and a meal and then the presentation of trophy's. Our bream comp is on this weekend, so dust off the 1 kilo line and get out there and have a go. Cheers Vince.



### Sponsors News

### Captain's Report

G'day all.

Well the weather was not kind to us for our snapper comp so we transferred it to the back up weekend but the weather still did not play the game, so we had an estuary comp. Some nice flathead were weighed in and the winners were.

1st line class- Karl Jensen

2nd biggest fish- Joan Steele

3rd Mystery Prize- Karl Jensen

Cheers

Kirka.



# Destination Feature

Wayne and Barb found this new web site... it tries to predict the best time to go fishing. What do you think? The site is available at <http://www.tides4fishing.com/au/queensland/mooloolaba>

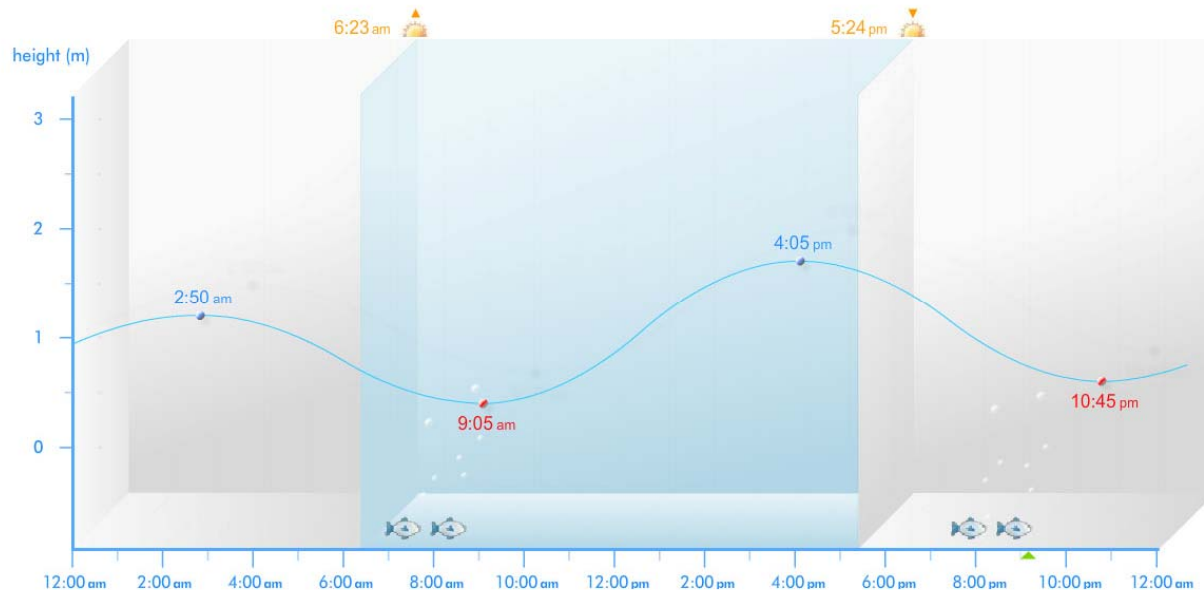
## Tide Chart: high tides and low tides in Mooloolaba today

Today Monday, 8<sup>th</sup> of August of 2011, the sun rose in Mooloolaba at 6:23 am and sunset was at 5:24 pm. The moon set at 1:20 am at 245° southwest. Then, the moon rose at 116° southeast at 12:11 pm.

In the high tide and low tide chart, we can see that the first high tide was at 2:50 am and the next high tide at 4:05 pm. The first low tide was at 9:05 am and the next low tide will be at 10:45 pm.

The tidal coefficient today is 53 (average). The tide heights today are 1.2 m, 0.4 m, 1.7 m and 0.6 m. We can compare these levels with the maximum high tide recorded in the tide tables for Mooloolaba which is of 2.2 m and a minimum height of 0.1 m.

The lunar phase is a Waning Gibbous. Today we had 11 hours and 1 minutes of sun. The solar transit was at 11:53 am and the length of time the moon will be visible will be 13 hours and 9 minutes.



## Solunar chart for Mooloolaba today

The solunar fishing calendar in Mooloolaba tells us that today is a bad day for fishing, the fish activity forecast is low, however, this is just a chance so we encourage you to take your rod and try it during solunar periods. Please, [read more about solunar tables](#). The best times of day for fishing are:

- ▶ from 1:20 am to 2:20 am, low activity minor period (moonset).
- ▶ from 6:45 am to 8:45 am, average activity Major period (moon down).
- ▶ from 12:10 pm to 1:10 pm, low activity minor period (moonrise).
- ▶ from 7:15 pm to 9:15 pm, average activity Major period (moon up).



## Wayne's Fishing Report from **Maroochydoore Fishing World**



MAROOCHYDOORE FISHING WORLD,  
22 FIRST AVENUE,  
MAROOCHYDOORE. Q. 4558.  
PHONE/FAX (07) 54432714  
EMAIL: fishingworld@bigpond.com



### **Fishing Report For (month) 2011**

#### **FISHING REPORT FOR AUGUST, 2011.**

**ESTUARY:** Flathead providing plenty of action for anglers working from Cotton Tree to Twin Waters using plastics and live bait. Bream also taking plastics and well presented baits after heavy berleying, with Bradman Avenue rocks returning better quality. Trevally hanging around the Maroochy Bridge and Mooloolah Bridge pylons.

**SURF:** Tailor have all but disappeared, however, bream, whiting and flathead have made up for it with good numbers in gutters along Kawana Beach and around the rocks in front of Sea Breeze Caravan Park. Trevally and bream on froggies at Pincushion.

**OFFSHORE:** Barwon Banks for red throat and mixed reef fish. Currimundi working for squire, sweetlip and parrot using floated pillies and bottom jigged squid. A few school mackerel taking trolled lures at The Gneerings.

**GAMEFISHING:** Water temp 20 degrees. Plenty of bait close inshore from Currimundi to Caloundra, so it's worth a trip out just to get bait. Whales moving north also make a great sight. Billfish are nowhere to be found at present.

**FRESHWATER:** Winter bass in the upper reaches of both the Maroochy and Mooloolah Rivers with poppers and small shallow divers returning fish up to 45cm. The warmest time of the day the go. Lake Baroon and Borumba firing for bass, lew and spanled perch on a variety of flies, lures

*Wayne*

### *Calendar of Events 2011*

August: Fish of the month are ??.

#### **11<sup>th</sup> (This Thursday)**

Members General meeting 7pm for  
7:30 start  
Coast Guard Mooloolaba

#### **12th, 13th and 14th**

Bream competition  
Weigh-in is at Fisherman's Road at  
1pm on Sunday 14th.

#### **27th**

Presentation night  
6.30pm, Horton Park Golf Club.

September: Fish of the month are ??.

#### **8th**

Members General meeting  
7pm for 7:30 start  
Coast Guard Mooloolaba

#### **9<sup>th</sup>, 10<sup>th</sup>, 11th**

Open competition.  
For locations south of Pt Cartwright.  
Weigh-in & BBQ @ Park beside Coast  
Guard Mooloolaba. Sun, 11<sup>th</sup> at  
3.30.

#### **25th**

John Pope memorial golf day.  
Glenview golf club, Irwin Way, 7.30  
start.







# Sunshine Coast SportFishing Club Inc



## Club Info

### Sunshine Coast Sportfishing Club

Secretary Dave Butler  
280 Kiel Mountain Road, Kiel Mountain. 4559  
Office Bearers for 2010 – 2011

President	Vince Kreis	5478 2526
Vice-President	Joe Hardman	5445 8969
Treasurer	Howard Morris	5477 7255
Secretary	Dave Butler	5442 1192
Club Captain	Mark Kirkpatrick	54561145
Club Recorder	Paul Jensen	5448 5707
Raffles	Joan Steele	5448 4946
Drinks officer	Carl Jensen	54508240
Assistant secretary	Anthony Lovett	54931132
Membership Officer	Col Arena	54765034
Newsletter Editor	Wayne Knibb	0438169882

Wayne's email      wayne.knibb@gmail.com

### 2011-2012 ANNUAL CLUB MEMBERSHIP FEES (July 1st to June 30)

You need to complete an application form and pay the membership officer. If you are not financial, you are not covered by any ANSA insurance policy.

2010-2011 Annual Fees	ANSA	SCSC	TOTAL
SENIOR FEMALE	\$45.00	\$25.00	\$70.00
SENIOR MALE	\$45.00	\$25.00	\$70.00
FAMILY (2A+2J)	\$70.00	\$30.00	\$100.00
JUNIOR (With registered senior)	\$ 6.00	\$ 4.00	\$10.00
JUNIOR (no registered senior)	\$ 5.00	\$15.00	\$30.00

HALF YEAR FEES – from December for NEW members.  
Seniors – \$35.00, Family – \$45.00, Juniors – same as above

BRING A FRIEND WITH YOU – get them to join the club and get \$10.00 discount off your annual fees for each full year adult member recruited (maximum discount - \$30.00)

### Boat Insurance

Members – boats entering ANSA or SCSC competition MUST have public liability insurance, together with all required current safety gear and equipment.

### ANSA Visitor Membership

For a visitor to be covered by the ANSA PLI Policy they must be registered as a temporary ANSA member before the event Costs is \$10.00 per senior, \$2.00 per junior, or \$25.00 per family.

### Newsletter Bits & Pieces

If you have any stories, pictures etc that could add to the reading enjoyment of our fellow members, please send to wayne.knibb@gmail.com  
Thanks, Wayne Knibb

Remember When you need something - Look to our SPONSORS



Dave Bolton  
5493 9376



Matt Robinson  
5479 5622



Wayne & Barb 5443 2714



Mark Armstrong  
5443 3208



5479 2844



Kosta Ladas 0418 872 599



Brett Mills 0419 663 023